



Loma Linda University

*School of Dentistry
Clinic Administration*

*Loma Linda, California 92350
(909) 558-4603
FAX (909) 558-4822*

**PLEASE TAKE THE TIME TO READ THE FOLLOWING INFORMATION.
IT SHOULD ANSWER ALL THE QUESTIONS THAT YOU MAY HAVE.**

CDCA-WREB-CITA Candidate Information MANIKIN BASED EXAM

We at the School of Dentistry wish to make your experience here as pleasant and convenient as possible. The information below should answer any questions you may have regarding the upcoming **MANIKIN BASED EXAM**.

The school of dentistry facilities, are taking measures to REDUCE RISK for possible exposures to COVID – 19.

Facility Fee: The facility fee is \$700.00 and will be collected by CDCA-WREB-CITA during online candidate registration.

All CDCA-WREB-CITA Candidates – at this point the following applies.

- **Enter through:**
 - **MAIN ENTRANCE 1 (only entrance)**
 - **Self-Screen prior to entering the building**
 - **If you are sick do not come on campus**

VISITOR RESTRICTIONS - ONLY candidates allowed in building – No Exceptions

- 1 **Building and Access Hours:** The building will be open from 6:00 a.m. to 6:00 p.m. during the examination, unless otherwise requested by the examiners.
- 2 **ATM Machines:** Not available

- 3 **Food Service:** Loma Linda University Medical Center has a full-service cafeteria located on the first-floor level of the hospital this is open from 6:00 a.m. to Midnight. **NO OUTSIDE FOOD ALLOWED TO BE BROUGHT INTO THE BUILDING**
- 4 **Supplies:** The following supplies will be PROVIDED to candidates from the Clinic Supply dispensary located in the main clinic during the license exam.

Air-water syringe tips - disposable	Gloves	Disposable Paper Trays
Amalgam – fast and regular	Goggles (disposable)	Rubber Dam
Articulating paper (Black)	Head Rest Covers	Tissue – facial
Autoclave Tape	Hi and Low Suction Tips	Vaseline
Bags – Sterilization / Tape	Alcohol	Wedges (all sizes)
Bibs and Holders	Masks	Disposable Gowns
Blades (15 & 12)	Matrix bands	Deck Paper
Cotton Rolls	Mouthwash / Cups	Floss
Cotton swabs	Patient Drapes	Gauze 2x2's
Disinfectant – Cavi Wipes	Disposable Tray Covers	

RESTORATIVE PORTION INFORMATION

**IMPORTANT –
CDCA-WREB-CITA will provide all typodonts for the exam.**

Refer to Candidate Manual for details on Restorative sections of the examination.

LLUSD WILL PROVIDED FOR ALL CANDIDATES

COMPOSITE PAK

CONTENTS: Polishing cups, Mylar, Acid etch, Scotch Bond Unidose, A2 Body, A3
Body & InterGuard

NO OTHER SHADES AVAILABLE AT LLUSD

6. ENDODONTIC PORTION INFORMATION

CDCA-WREB-CITA will provide all typodonts for the exam.

Refer to Candidate Manual for details on Endodontic Section

Endodontic supplies provided:

Sealer, EDTA, Gutta percha (various ISO and Conventional sizes), Paper points (various sizes – Fine, Medium, Coarse), RC Prep, Cotton pellets, Alcohol, Rubber dams, Irrigation syringe and needle, Suction tips.

Endodontic supplies NOT provided are:

Matching gutta percha cones (ie Vortex Blue 30.60), Files (K, H and rotary), Instruments, Burs (friction grip/latch, slow and high speed, traditional and Gates glidden), Heat sources (eg system B, torches, lighters), Warm obturation material (eg Obtura).

(Available at Dental Supply for purchase)

WE DO NOT SELL OR RENT HAND PIECES

Hand piece options for Clinic & Endodontic section

Refer to #9 - Option 1 or Option 2 can be used on Clinic & Endodontic Lab

7. PROSTHODONTICS PORTION INFORMATION

CDCA-WREB-CITA will provide all typodonts for the exam.

Refer to Candidate Manual for Details on Prosthodontic Section

The school will provide the PVS (Polyvinyl Siloxane) putty.

You will need to provide:

1. Bring all your OWN instruments you will need for this procedure

8. **NO INSTRUMENT OR EQUIPMENT RENTAL AVAILABLE AT LOMA LINDA UNIVERSITY SCHOOL OF DENTISTRY.**
NO HANDPIECES, NO CURING LIGHTS, NO COMPOSITE GUNS OR NO CAVITRONS FOR SALE, RENT OR PROVIDED DURING EXAM AT LLUSD.

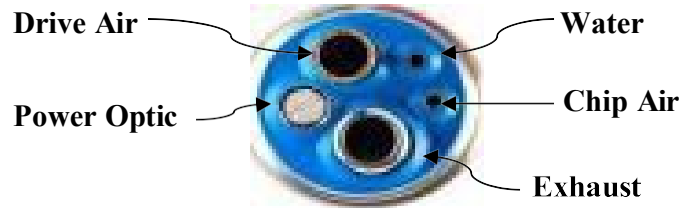
Hand piece Options

OPTION 1 –

9. **CLINIC EQUIPMENT** - Dental units are equipped with air control boxes with Midwest “Q” quick connect high speed hand piece tubing. Slow speed is standard 4-hole tubing. **Candidates must use the Midwest adaptor for a high speed handpiece, NO EXCEPTIONS.** This Adaptor is available at LLU School of Dentistry / Dental Supply at an approximate cost of \$20.00.

All units have a 3-way air-water syringe. **Syringe tips are provided.**

All units have a quick-connect water source for ultrasonic scalers. Sonic scalers which fit the 4-hole hand piece tubing can also be used. **The School does not provide ultrasonic or sonic scalers.**



All dental chairs are equipped with fiber optic light for high-speed hand pieces.

Eye wear is required for candidate for all clinic & lab sessions.

OPTION 2 –

Electric Hand piece – Bien Air model MX2 (ONLY!)

10. **Dental Supply Store:** The School store is located in a central area on the first floor. Instruments and supplies may be purchased by candidates. The store will be open prior to and during the examination (except Saturday & Sunday) **DISPOSABLE GOWNS WILL BE PROVIDED ON CLINIC AND IN LAB.**
12. **Waste Disposal:** Any material that can poke, cut, tear, i.e. needles, blades, burrs etc. must be deposited in the special **"RED CONTAINERS"** marked **"SHARPS"**. **ENCLOSED IS THE INFECTION CONTROL PROTOCOL FOR THE LLU DENTAL CLINICS.**
13. **Dental Unit Malfunctions:** Report equipment problems to the CDCA-WREB-CITA Staff on the Main Clinic or in the area of where your exam is and an equipment technician will promptly come to your unit.
14. **Parking Guidelines:** Candidates, may use the parking lot adjacent to the School of Dentistry until it is filled. **THE ONLY ACCESS TO THIS LOT WILL BE FROM ANDERSON STREET AND UNIVERSITY COURT AT THE DENTAL SCHOOL ENTRANCE.** Additional free parking is available in lot "X", on the northwest and lot "U" on the northeast corner of Anderson and Stewart Streets, one block north and of the Dental School. Street parking is limited.

EMERGENCY PHONE NUMBER

while inside the School:
8333 - Medical Emergency

The examiner will have access to the school's automatic external defibrillator (AED) and provide appropriate action according to the American Heart Association (AHA) standards until emergency responders arrive.

1.1 Preparation of operatory

- Always use gloves, mask, wear safety glasses and protective clothing when disinfecting the operatory.
- Prepare the operatory before use by removing debris from the floor and counter tops, disinfecting all surfaces identified below.
 - Use 1st Cavi Wipe XL Disinfecting Towellette to clean cubicle.
 - Use 2nd Cavi Wipe XL Disinfecting Towellette to disinfect the cubicle.
- Wipe all environmental surfaces to include the **handle** and **switch** of the dental light. Handles, receptacles, brackets and valves of saliva ejector, high speed evacuator. Hoses for suction and air rotors: disinfect 24" from connection to suction tips and hand piece, mayo stand and counter surfaces. Patient and operator chairs: those parts that may have been touched with contaminated hands or been splattered (ie. Air-water syringe handle).
- Flush air-water syringe and hand piece hoses for **2 minutes** into high speed evacuation system or the sink.
- Remove and dispose of gloves.
- Wash hands with the use of antimicrobial soap for at least 15 seconds.
- Pick up from the supply cart and dispensary supplies and equipment to be used during the exam.
- Set up protective covers, barriers, supplies and instrument cassette(s).
- Put protective mask, exam gloves on counter. Wear either protective eyewear or face shield. **(Personal eye wear is not a substitute for eye protection).**
- Your cubicle is now ready and you can proceed with your examination.

Local Motels

- | | | | |
|----|---|-----|--|
| 1. | TownePlace Suites by Marriott
10336 Richardson Street,
Loma Linda, | 9. | Mission Inn
3649 Mission Inn Ave.
Riverside
951-784-0300
1-800-843-7755 |
| 2. | Hilton
Garden Inn
1755 South Waterman Avenue
San Bernardino, Ca. 92408
909-806-4040 | 10. | Residence Inn (Marriott)
1040 E. Harriman Place
San Bernardino, Ca. 92408
800-331-3131 & 909-382-4564 |
| 3. | Days Inn by Wyndham
1386 East Highland Avenue
San Bernardino
909- | 11. | Fairfield Inn & Suites (Marriott)
1041 E. Harriman Place
San Bernardino, Ca. 92408
800-228-2800 & 909-382-4560 |
| 4. | DoubleTree by Hilton
285 East Hospitality Lane
San Bernardino
909- | 12. | Comfort Suites
1230 W. Colton Ave.
Redlands, CA. 92374
909-335-9988 |
| 5. | Hampton Inn & Suites
895 East Hospitality Way
San Bernardino
909- | 13. | Ayres Hotel
1015 W. Colton Ave.
Redlands, CA. 92374
909-335-9024 |
| 6. | Loma Linda Inn
24532 University Ave.
Loma Linda
909-583-2500 | 14. | Country Inn & Suites
1650 Industrial Park Ave.
Redlands, Ca 92374
1-800-596-2375 & 909-792-7913 |
| 7. | Best Western
294 E. Hospitality Lane
San Bernardino, CA 92408
909-381-1681 | | |
| 8. | Homewood Suites by Hilton
885 East Hospitality Lane
San Bernardino
909- | | |

Where to Dine

Angelo's

11275-D Mt. View Ave..... 909-796-0080
Loma Linda, CA.

BJ's Restaurant

1045 Harriman Pl 909-380-7100
San Bernardino, CA, 92408

Black Angus

290 E. Hospitality Lane..... 909-885-7551
San Bernardino, CA.

Cafe Society

24575 University St..... 909-799-8511
Loma Linda, CA.

Chili's Grill & Bar

475 E. Hospitality Lane..... 909-885-6167
San Bernardino, CA.

Claim Jumper

1905 Commerce Center St.
San Bernardino, Ca 92408..... 909-383-1818

El Torito

118 E. Hospitality Lane..... 909-381-2316
San Bernardino, CA.

Golden Corral Buffet

325 E. Hospitality Lane..... 909-890-1137
San Bernardino, CA 92408

Hometown Buffet

24990 Redlands Blvd 909-796-6588
Loma Linda, CA.

International House of Pancakes

219 E. Hospitality Lane..... 909-888-7880
San Bernardino, CA.

San Bernardino, CA.

Lotus Garden

111 E. Hospitality Lane..... 909-381-6171
San Bernardino, CA.

LLUMC Medical Center Cafeteria (Vegetarian)

Medical Center RM 1301 (Lobby Level)..... 909-558-4365

Napoli's

24960 Redlands Blvd 909-796-3770
Loma Linda, CA.

The Olive Garden

460 E. Hospitality Lane..... 909-381-2747
San Bernardino, CA.

Patio Pantry (Vegetarian)

24954 Prospect Ave..... 909-558-4580
Loma Linda, CA.

Red Lobster

195 E. Hospitality Lane..... 909-888-2288
San Bernardino, CA.

Mimi's Cafe

395 E. Hospitality Lane..... 909-890-4333
San Bernardino, CA.

Sizzler Family Restaurant

1800 So. Waterman Ave 909-381-4020
San Bernardino, CA.

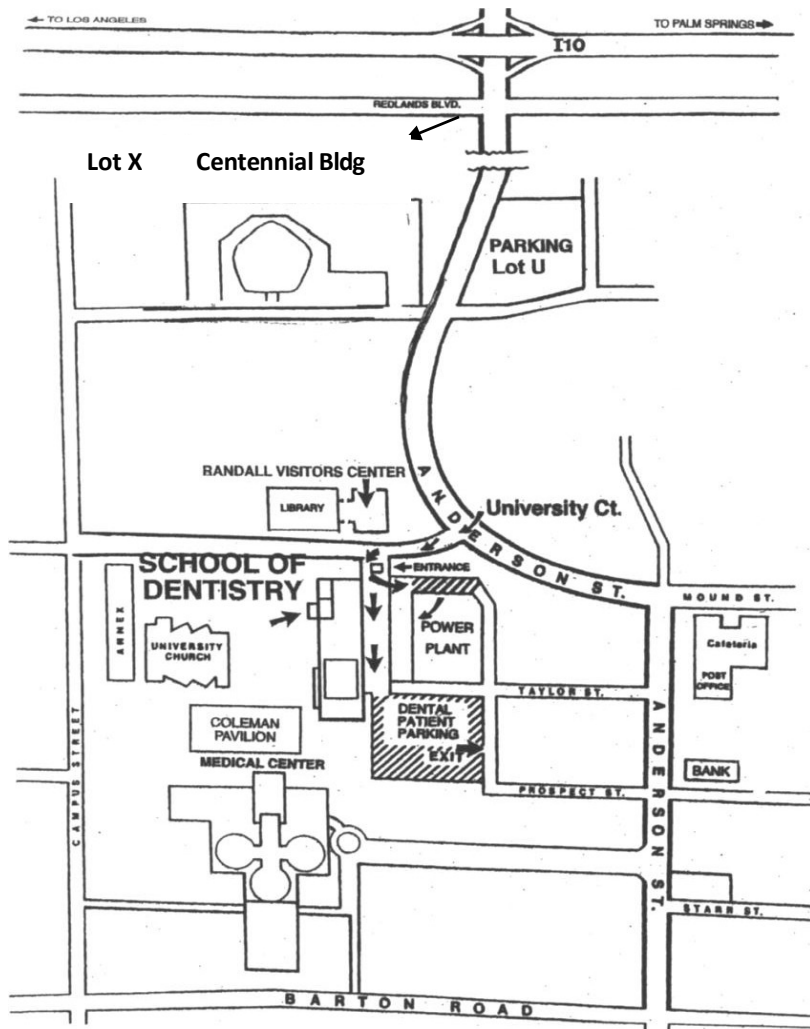
Surfer Joe's

251 E. Redlands Blvd. 909-824-5523
San Bernardino, CA.

TGI Friday's

390 E. Hospitality Lane..... 909-888-9934

Directions to Campus



FROM THE SAN BERNARDINO AREA:

If coming from northern inland routes (I-10 or I-215), go through San Bernardino to the I-10 interchange; then turn east on the San Bernardino freeway (I-10) for two miles to the Anderson/Tippecanoe offramp. Turn south on Anderson.

FROM THE LOS ANGELES AREA:

Take the San Bernardino freeway east (I-10) past the I-215 interchange, and two miles beyond, take the Anderson/Tippecanoe offramp. Turn south on Anderson.

FROM THE RIVERSIDE AREA:

Take Route 91 east to the I-215 north to the San Bernardino freeway (I-10) east, exiting at the Anderson/Tippecanoe offramp. Turn south on Anderson.

FROM THE DESERT AREA:

Take the San Bernardino freeway west (I-10) to the Anderson/Tippecanoe offramp, then turn left at the stop light (south on Anderson).

ADDRESS:

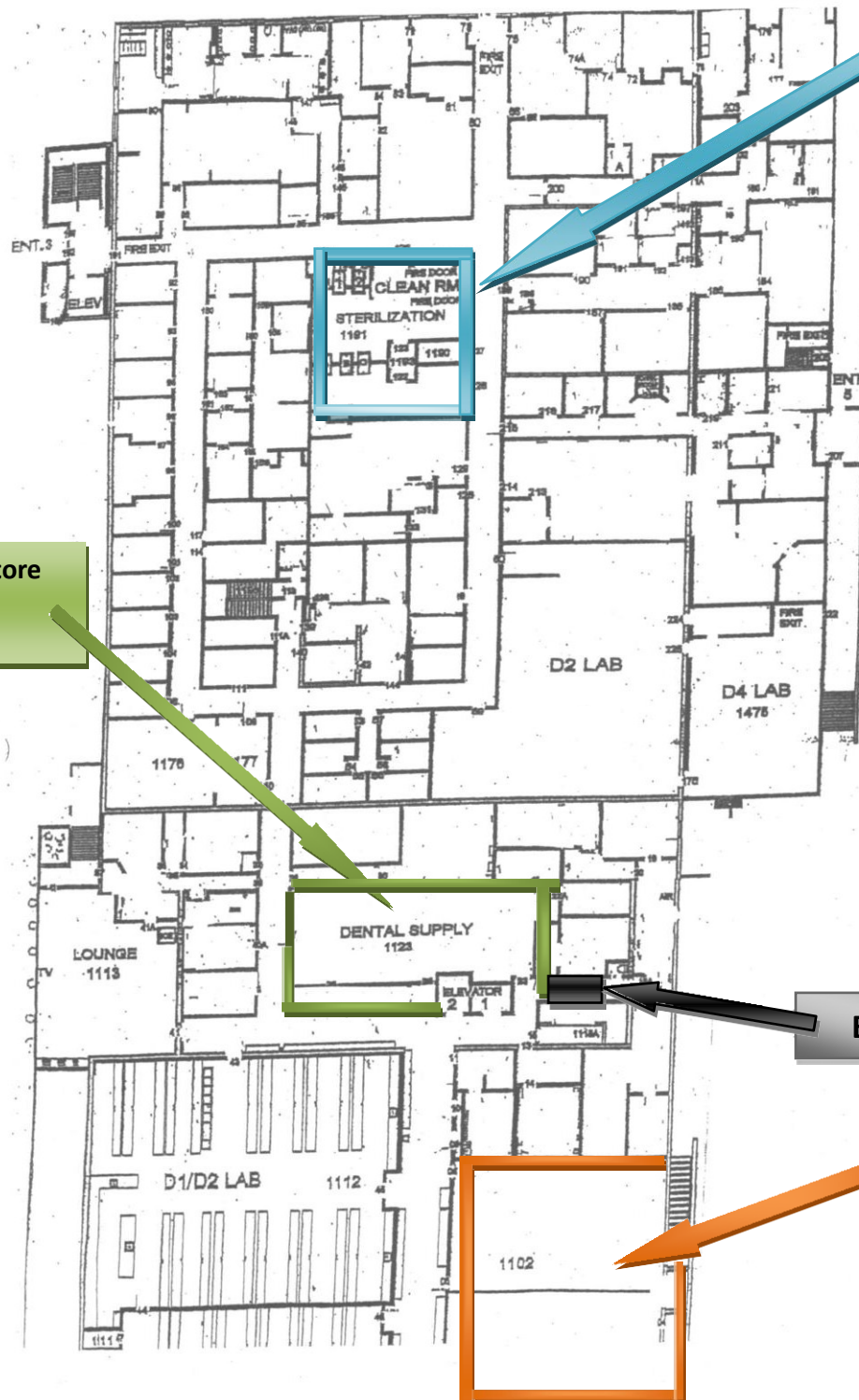
LOMA LINDA UNIVERSITY SCHOOL OF DENTISTRY
11092 Anderson Street
Loma Linda, CA 92354

PHONE:

(909) 558-4222

1st Floor

Sterilization 1st
Floor Pick-up.



Dental Supply Store
1123

Elevator

Amphitheatre
1101-1102
ORIENTATION

Version 1

	131	130		125	124	119	118	113	112	107	106
136	135	132	129	126	123	120	117	114	111	108	105
137	134	133	128	127	122	121	116	115	110	109	104

Grad Perio Dept. Rm 2402

East Clinic Rm 2401

70 71 72 73 103 102 101

100 99 98 97 96 95 94 93 92

69 74 75 76 77 78 79 80 81
 68 64 63 62 61 60 59
 67 66 65 37 38 39 40 41 42
 36 35 34 33 32 31
 13 14 15 16 17 18
 12 11 10 9 8 7

QA Station

QA Station

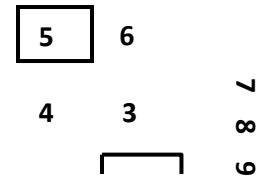
82 83 84 85 86 87 88 89 90 91
 58 57 56 55 54 53 52 51 50 49
 43 44 45 46 47 48
 30 29 28 27 26 25
 19 20 21 22 23 24
 6 5 4 3 2 1

Main Clinic Rm 2240

Lobbies

HYG.
OFFICE

PCC



Robin – School
Coordinator's Office
Room 2300

Technology
Center



Main Clinic-Second Floor

10 Groups x 10 Students

Undergraduate DDS, DH

Not to scale

