

SALT LAKE COMMUNITY COLLEGE



Exam Site Information for Candidates
CDCA-WREB-CITA
2023 Local Anesthesia Clinical Examination

SALT LAKE COMMUNITY COLLEGE
JORDAN CAMPUS
3491 W. WIGHTS FORT RD.
W. JORDAN, UT 84088
(801) 957-6001

Exam Site Information for Candidates
2023 CDCA-WREB-CITA Local Anesthesia Clinical Examination

Table of Contents

1. School Facility and Services

- Facility Fees
- Clinic Address, Building Access and Hours
- Parking
- Security and Emergency Services
- ATM Machine
- Food Services Onsite

2. Preparing for the Exam

- Dental Operatory Units
- Equipment, Instruments and Expendable Materials
- Sterilization Services

3. During the Exam

- Infection Control (Surface Asepsis)
- Medical Emergencies and Equipment

4. Travel and Lodging Information

- Airport Information
- Ground Transportation
- Hotel Accommodation

5. Campus Map

6. Clinic Floor Plan

7. Required School-provided Expendable Dental Materials Appendices


1. School Facility and Services

- **Facility Fees**

- The facility fee is \$100.00 and will be collected by CDCA-WREB-CITA at time of online registration.

- **Location, Building Access and Hours:** Salt Lake Community College, Jordan Campus is located at 3491 West Wights Fort Road, West Jordan, Utah 84088. The Dental Hygiene Clinic is housed in the High Tech Learning Center Building, Room 173. The HTC building and dental hygiene clinic will be open from 6:00 a.m. to 6:00 p.m. during the Local Anesthesia Examination.

Parking: Parking at the SLCC Jordan Campus is monitored by campus parking services. Digital parking permits will be activated for candidates and patients by providing a photo of your vehicle license plate upon arrival to the dental hygiene reception desk located in HTC 173. **The digital parking permit is valid for Student spaces in parking lot J-2 ONLY**(see map link below).

- Candidates and patients may park in the following areas within lot J-2:
Student spaces (designated by yellow painted lines).
*  State Issued Handicap Permits are Required for ALL Handicap Spaces
***Do NOT park in "Metered" parking spaces**
***Do NOT park in faculty BLUE lines spaces**
SLCC is NOT responsible for personal items left unattended in vehicles in the parking lot.

Map: <http://www.slcc.edu/parking/docs/maps/jordan-parking-map.pdf>

- **Security and Emergency Services:** Emergency exits, portable oxygen, fire extinguisher and AED unit are indicated on the clinic map. Equipment will be identified, and protocol discussed during clinic tour.

Reference for medical needs are as follows:

Emergency Ambulance, Fire and Police:	911
Jordan Valley Medical Center- Emergency:	(801) 562-4244
Campus Security-Utah Highway Patrol:	(801) 957-3800
<i>(When using campus telephones dial 3800 for UT Highway Patrol)</i>	

- **ATM Machine:** NO ATM services are available on the SLCC Jordan Campus.

Food Services Onsite: Food and drinks are not permitted in the clinical areas

Fresh Seasons Café located in the High-Tech Learning Center East of the Dental Hygiene clinic. They serve a limited menu of breakfast and lunch items, coffee, drinks, snacks, and ready-made salads.

Hours are: 8:00am-3:00pm Mon.-Thurs., Friday 8:00am-2:00pm.

The Campus Bookstore (Located in the Huval Student Center) has beverages and snacks available for purchase.

Hours are: 9:00am – 5:00pm Mon. – Thurs., Friday 9:00am-2:00pm.

Beverage and snack vending machines are located at the east end of the lobby in the hallway and near the Cafe.

There are several fast-food restaurants on 9000 South approximately 2-5 miles east of campus.

2. Preparing for the Exams

a. **Local Anesthesia Exam, if applicable**

- o **Equipment, Instruments and Expendable Dental Materials:** Refer to the respective Local Anesthesia Candidate Guide for a list of materials and armamentarium that the Candidate must provide. Each operatory is equipped with one (1) ADEC Dental chair, one (1) delivery unit equipped with an air/water syringe, high volume suction and low volume suction. A limited number of instruments are available on an emergency basis only, requests can be made by candidate at sterilization (173J). (no additional fees will be charged if necessary). Expendable materials are located at both ends of the clinic exam area on supply carts.

A. Air/Water Syringe Tips: Disposable air/water syringe tips will be utilized during all exams and are provided by the SLCC DHY clinic. Additional tips if necessary are located on the supply carts.

B. Expendable Materials: Expendable local anesthesia materials supplied by the school are located in the clinic exam area on the supply cart. **See complete list on Appendix A.** (items not listed are responsibility of Candidate).

- **Sterilization Services:** Onsite sterilization will be available upon request. Candidates should arrive with all instruments previously sterilized for exams. Sterilization supplies will be available on the supply carts and in the sterilization area. Sterilization hours are 7:00am to 5:00pm Monday-Thursday, 8:00am-11:00am Friday.

If you choose to have your instruments sterilized by the SLCC clinic upon completion of your exams, give your bagged instruments, with your candidate number to the sterilization attendant located in room (173J). They will provide you with a sterilization retrieval receipt. Please allow 24 hours for sterilization process.

*Note, we will not clean or remove your items from their labeled bags or cassettes prior to sterilization.

If you choose not to have your instruments sterilized by SLCC upon completion of your exams, give your contaminated bagged instruments, identified with your candidate number to the sterilization attendant located in room (173J). They will provide you with a sterilization retrieval receipt; your items will be enclosed in a biohazard bag marked NON-Sterile and placed at the front desk for immediate pickup.

*All instruments can be claimed at the clinic reception desk in HTC 173 by candidates using their sterilization retrieval receipt by 5:00pm Thursday.

- **Candidates retaking local anesthesia exam onsite will need their instruments sterilized prior to retake clinic entrance. Notify the reception desk attendant immediately so that priority can be placed on sterilizing your instruments for retakes. SLCC does have a limited quantity of items available when necessary to loan at no additional cost. Requests can be made by candidate in the sterilization area (HTC173J).**
- **Salt Lake Community College is not responsible for lost, stolen or damaged instruments**

3. During the Clinical Exam

- **Dental Operatory Units:** (1)ADEC Dental chair, one (1) delivery unit equipped with an air/water syringe, high volume suction and low volume suction.
 - a. **Infection Control (Surface Asepsis): Surface Asepsis**
 - i. Handles of the unit light, touchpads, chair/headrest, controls, suction arms etc. must be covered with either clear plastic, barriers, wrap or barrier film.
 - ii. The patient chair, dental unit, counter tops, and operator stool should be disinfected with disinfectant wipes between sessions
 - iii. Disinfectant wipes, plastic/barrier chair covers and plastic/barrier wrap are provided by SLCC Jordan Campus for all candidates free of charge.
 - iv. Disposable plastic overgloves are available (free of charge) for candidates upon request.
 - v. Candidates must furnish their own sturdy utility gloves (nitrile preferred) to be worn when handling or packaging dirty instruments through (or to and from) the candidate clinic area.
 - vi. Universal infection control guidelines and Personal Protective Equipment (P.P.E.) and guidelines should be observed during the CDCA-WREB-CITA exam at SLCC Jordan Campus. This includes standard OSHA standards and guidelines.
- **Hazardous Waste Disposal (exam-type specific):**
 - **Local Anesthesia:** Any blood/saliva-soaked waste is considered hazardous and must be disposed of in red biohazard bags (available on the supply carts).
Biohazard bags may be attached to the sides of the suction arm. At the end of each session, bags should be sealed with self-sealing strip and brought to sterilization (173J) where they will be placed in biohazard waste containers.
 - B. Sharps Disposal:** All needles, anesthetic cartridges and any other disposable sharps are to be placed in the red plastic sharps containers located on each countertop area. NO disposable sharps should be left with instruments taken to sterilization from clinical area (operatory).

Emergency Medical Equipment: In the case of any medical emergency candidate must immediately notify the CDCA-WREB-CITA Chief.

- An emergency medical kit is located in the labeled cabinet of operatory 9.
- Emergency oxygen units are available in specific locations that will be indicated during the clinic tour.
- AED unit is available on the north wall between operatories 12 and 13

In order to alert clinic personnel to a medical emergency occurring with your patient, the following protocol must be followed:

Remain with your patient. Do NOT leave him/her unattended. You must alert & send a nearby assistant/responsible person to report the problem to the CDCA-WREB-CITA Chief. The CDCA-WREB-CITA Chief will make a judgment as to whether an emergency requiring outside help exists.

If needed assistant/responsible person will be sent to the nearest phone to activate the Emergency Medical System (EMS) by dialing 911.

As appropriate for type of emergency:

Place the patient in either a sitting or supine position,

Assess responsiveness

Check breathing

Check airway for blockage/aspiration

Check pulse

Be prepared to perform CPR, as indicated

Embassy Suites by Hilton South Jordan Salt Lake City	10333 S. Jordan Gateway South Jordan, UT 84095	5.3	801-617-4040	www.embassysuites3.hilton.com
--	--	-----	--------------	--

5. Campus Map

SALT LAKE COMMUNITY COLLEGE JORDAN CAMPUS



***J-2 IS THE DESIGNATED PARKING LOT DURING WREB EXAMS**

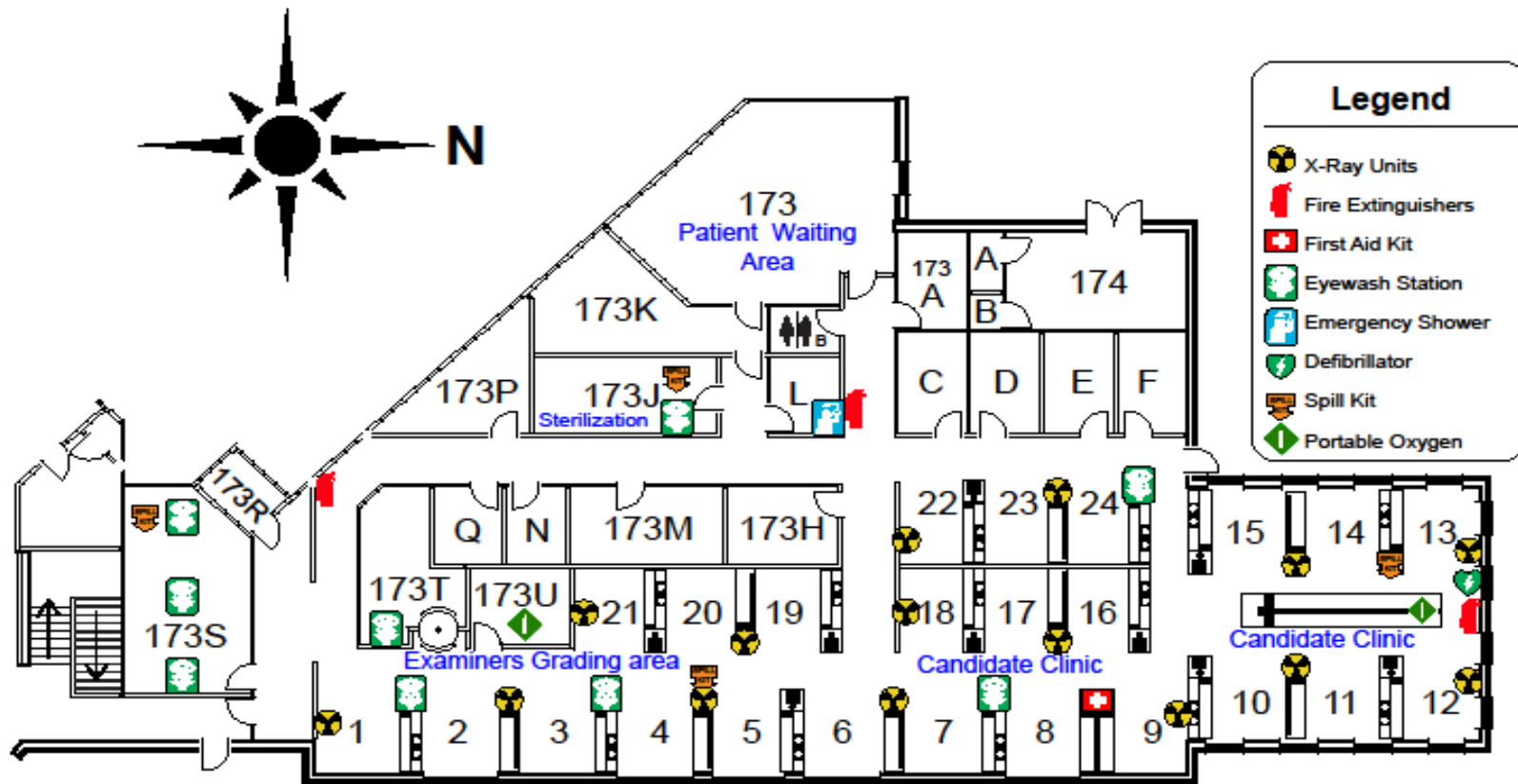
SALT LAKE COMMUNITY COLLEGE (JORDAN CAMPUS) MAP LINK:

<https://myatlasccms.com/map/?id=726#!ct/11618,15962,11084,10604?ce/9198>

Salt Lake Community College

Dental Hygiene Clinic

Jordan Campus HTC



Required School-provided Expendable Dental Materials Appendices

APPENDIX A – Expendable Local Anesthesia Materials List Provided by Exam Site Host (School) To be provided in sufficient quantities for all Local Anesthesia Candidates		
2x2 gauze squares	Cotton-tip applicators	Patient bib clips, disposable
Air/water syringe tips	Drinking cups	Patient napkins/bibs
Antimicrobial mouthwash	Face masks	Sanitizing materials
Anesthetic(s)	Facial tissue	Soap
Local anesthetic(s) Lidocaine 2% w/1:100,000 epi • Mepivacaine 3% plain	Gloves	Standard saliva ejectors
• Topical anesthetic(s) Benzocaine gel 5% Lidocaine ointment- <i>available upon request</i>	• Gloves, nonlatex (S, M,L,XL)	Surface disinfectant
Autoclave bags, small	• Overgloves	Syringe Needles (long & short)
Autoclave bags, medium	Headrest covers	Tray covers
Autoclave tape	Instrument trays, disposable	Trash bags
Barrier covers/tape	Paper towels	