

# San Joaquin Valley College



Exam Site Information for Candidates  
CDCA-WREB-CITA  
2023 ADEX Hygiene Examination

San Joaquin Valley College (SJVC)  
ONTARIO CAMPUS  
4580 Ontario Mills Parkway  
Ontario, CA 91764  
(909) 291-8121

**Exam Site Information for Candidates**  
**2023 ADEX Dental Hygiene, Local Anesthesia & Restorative Examinations**

**Table of Contents**

**1. School Facility and Services**

- Facility Fee
- Clinic Address, Building Access and Hours
- Parking
- Security and Emergency Services
- ATM Machine
- Food Services Onsite

**2. Preparing for the Exam**

- Equipment, Instruments and Expendable Materials
- Sterilization Services

**3. During the Exam**

- Infection Control (Surface Asepsis)
- Medical Emergencies and Equipment

**4. Travel and Lodging Information**

- Airport Information
- Ground Transportation
- Hotel Accommodation

**5. Campus Map**

**6. Clinic Floor Plan**

**7. Required School-provided Expendable Dental Materials Appendices**

**8. Covid Screening & Social Distancing**

## 1. School Facility and Services

- **Facility Fee**

The facility fee is \$170.00 and will be collected by CDCA-WREB-CITA at time of online registration.

- **Location, Building Access and Hours:**

Dental hygiene **CLINIC** address:

4580 Ontario Mills Parkway

Ontario, CA 91764

Telephone number:

(909) 291-8121

Contact name for questions regarding the school, equipment, etc.

Angela Barnet, RDH BS, MAOL

Main NORTH entrance will be used

Hours building open 6:00am-6:00pm daily for duration of exam

- **Parking:** Candidates and Patients may park in any area designated as STUDENT PARKING. Please DO NOT park in any slot along the perimeter of the building, or spot marked "Reserved Parking." There are no parking fees.
- **Security and Emergency Services:** Onsite Security will be available throughout the examination. The Site Host and CDCA-WREB-CITA Coordinator will have immediate contact availability.
- **ATM Machine:** NONE AVAILABLE.
- **Food Services Onsite:** Vending machines available upstairs

## 2. Preparing for the Exams

- **Equipment, Instruments and Expendable Dental Materials:**

**A. Handpiece and Prophy Angle Hookups:** SJVC will NOT have any handpieces or prophy angles available during the examination. However, for Candidates who choose to bring their own handpieces we have a 4-Hole Slowspeed hose connection.

**B. Sonic/Ultrasonic Devices:** All operatories are equipped with a Dentsply 30K Mounted Magnostriuctive Ultrasonic device for your use. You must supply your own handpiece and inserts. However, these are available for rent: \$30.00 for the handpiece and \$30.00 for each insert (100 FSI and 1000 FSI are available). All payments must be in cash. Candidates who wish to use their own Ultrasonic device should note the following compatibility requirements: the ADEC Dental Chair has a Quick-Connect water source to adapt a male hose connection.

**C. Air/Water Syringe Tips:** Candidates are provided disposable Air/Water Syringe Tips. Should you need additional, they will be available at the Sterilization Window

**D. Blood Pressure Cuffs and Stethoscopes:** Candidates must provide their own Blood Pressure Cuffs and Stethoscopes.

## E. Expendable Materials: See Appendix

- **Sterilization Services: No sterilization services will be available after the test session. Sterilization pouches will be available for transport of instruments.**

### 3. During the Clinical Exam

- **Dental Operatory Units:** SJVC Dental Hygiene Clinic is equipped with ADEC Dental Patient Chairs that are capable to support a left-handed or right-handed Candidate. There will be an adjustable clinician chair. Each dental unit has its own counter and a shared sink between two units.

**Infection Control (Surface Asepsis):** Note that proper PPEs should be worn at all appropriate times (gloves, eyewear, gown and mask).

- **Unit Set-Up**
  - With **Cavi-Wipes** surface disinfectant, wipe down:
    - Unit control arm, trays and all hoses
    - Dental patient chair and candidate chair upholstery
    - Dental unit light handles and light switch
    - Dental unit counter top
    - Any personal items used (i.e., protective eye wear, bib clips)
  - **Purge** water unit lines for 2 minutes at the beginning of the day
  - Chairs, Light, and tray barriers are **not** needed for the manikin exam but will be provided if needed.
- **During Examination**
  - **Please use caution when refilling the unit water bottle**
    - Use clean hands to remove and replace. **At no time** should the water tubing be touched; the refilled bottle should be guided back **without** the use of holding the tubing.
- **Unit Break Down**
  - With Cavi-Wipes surface disinfectant, repeat the steps above using **wipe-dry-wipe** (fresh wipe for second pass)
    - Use caution around any electrical controls and switches (do not over saturate these areas)
  - Purge water unit for 30 seconds
  - You may be requested to setup the unit for the next clinician
- **Emergency Medical Equipment:** Emergency kit, ice packs, and oxygen tank will be located near the Chief Examiner. Other emergency equipment is located in sterilization: The AED, and First Aid Kit are located on the East Wall, just as you enter sterilization. A fire extinguisher is located in sterilization. An eye wash station is on the sink faucet near radiology. In the event of an emergency, notify the Chief Examiner. At the discretion of the Chief Examiner, the Site Coordinator will initiate the EMT by calling 911 as indicated.

Candidates are encouraged to locate their nearest exit from the clinic and orientation room. In the event of an emergency, all candidates and patients will exit through the closest exit.

#### 4. Travel and Accommodation Information

- Airport Information: Ontario Airport
- Ground Transportation: Taxi, Uber, Car Rentals
- Hotel Accommodations:

Hotel	Address	Phone	Estimate	Website
Best Western	3400 Shelby St Ontario, CA	909.466.9600	~\$100/night	<a href="http://book.bestwestern.com/">http://book.bestwestern.com/</a>
Country Inn (walking distance)	4674 Ontario Mills Pkwy Ontario, CA	909.204.5365	~\$90/night	<a href="http://www.countryinnontario.com/">http://www.countryinnontario.com/</a>
Double Tree	222 N. Vineyard Ontario, CA	909.937.0900	~\$140/night	<a href="http://www.hilton.com/search/dt/US/CA/Ontario?WT.srch=1">http://www.hilton.com/search/dt/US/CA/Ontario?WT.srch=1</a>

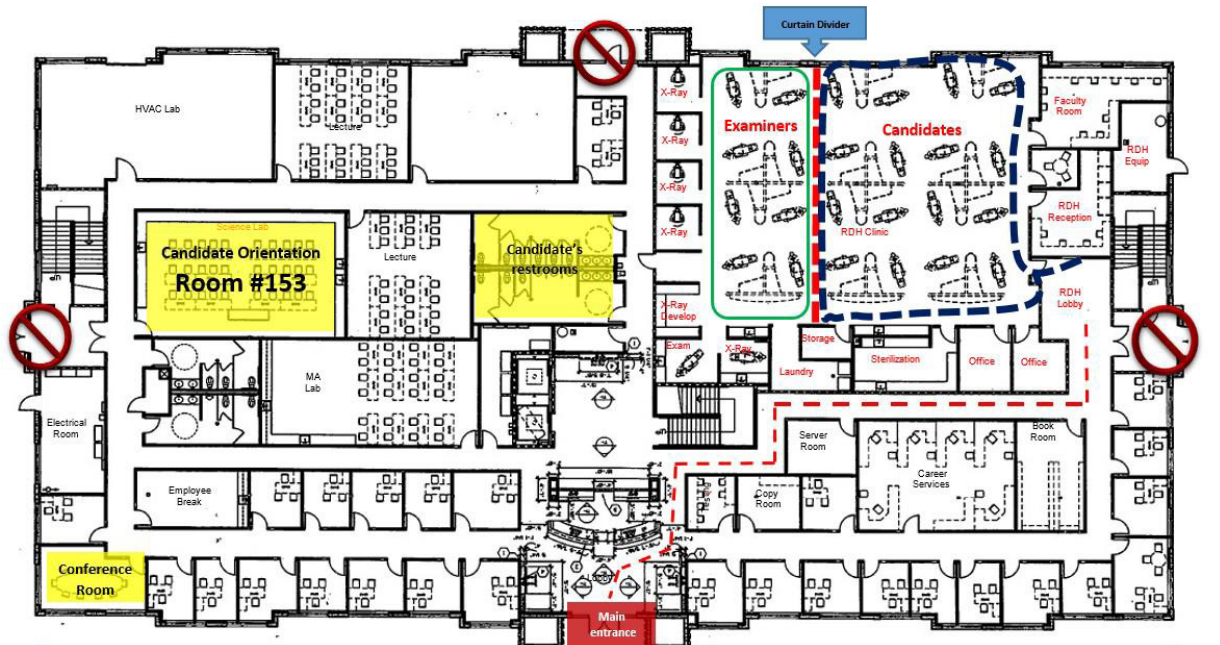
- Note that the Country Inn is one-minute walking distance from the campus.
- Ontario Mills shopping center is a five-minute walk.

#### 5. Maps

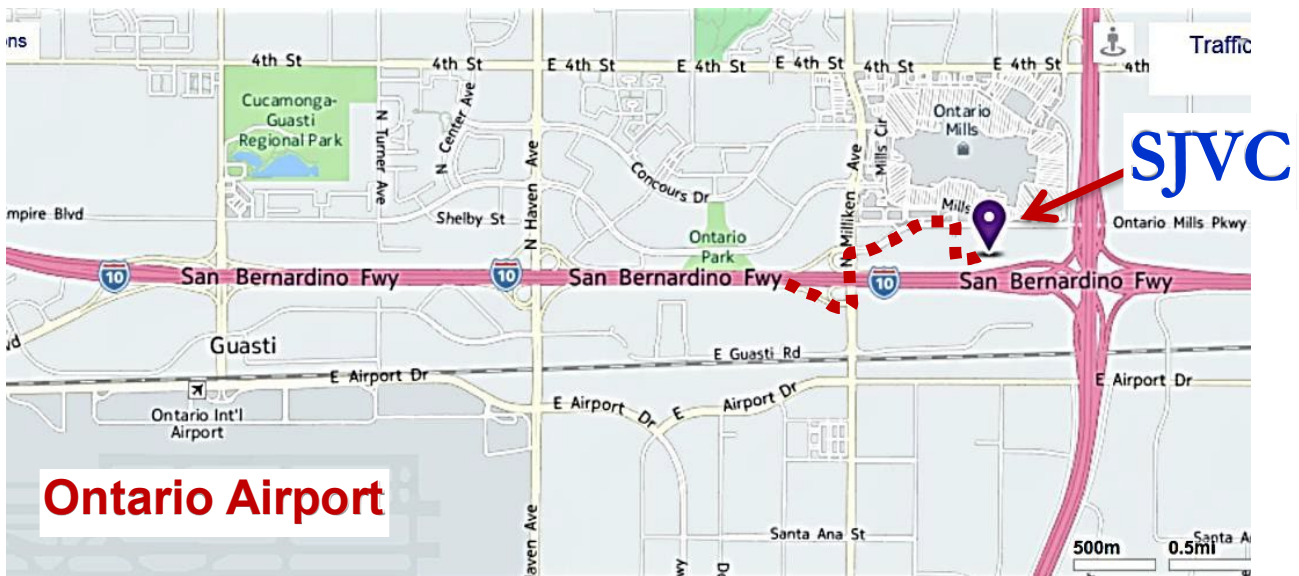
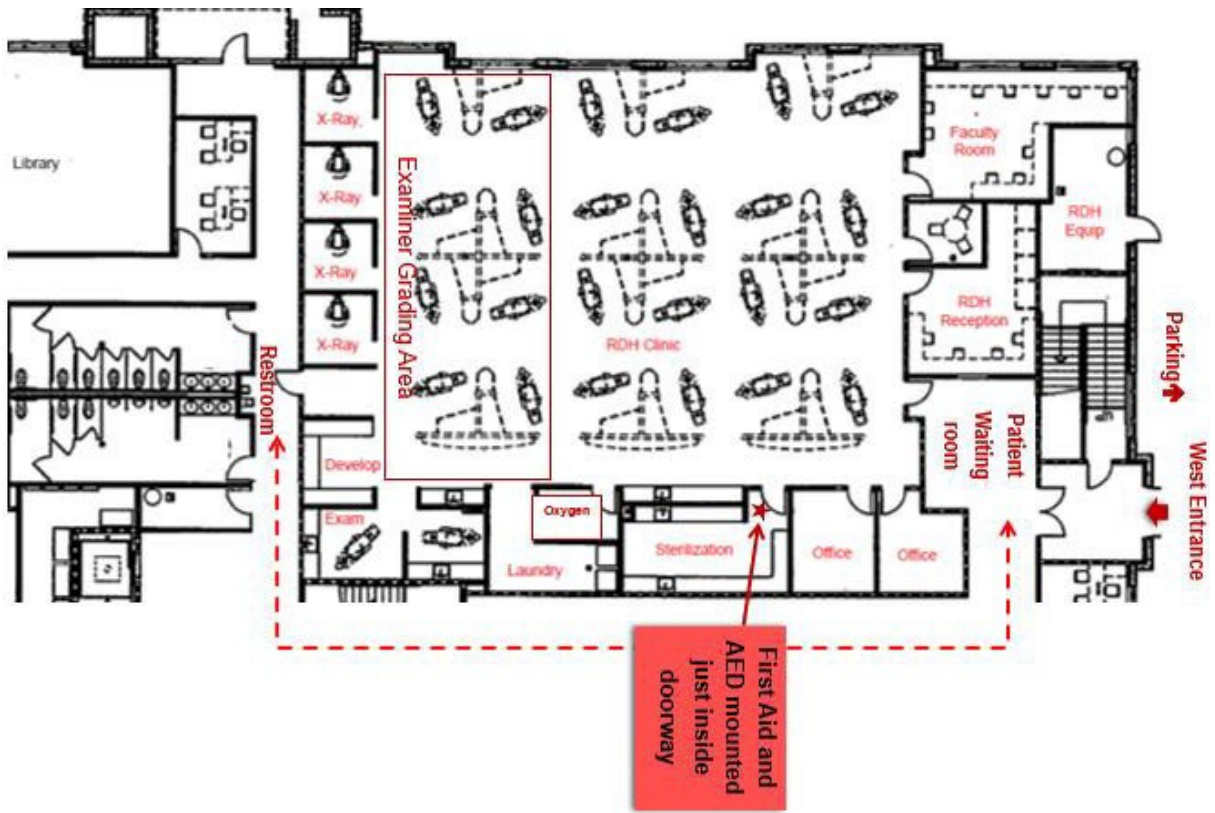
- Campus Map: Include map of campus and directions to clinic



SJVC Ontario Campus – 1<sup>st</sup> floor



6. **Clinic Floor Plan:** Indicate Patient waiting area, Candidate clinic, Examiner grading area, areas of emergency equipment



## 7. Required School-provided Expendable Dental Materials Appendices

<b>APPENDIX A – Expendable Dental Hygiene <b>MANIKIN</b> BASED Materials List Provided by Exam Site Host (School) To be provided in sufficient quantities for all Dental Hygiene Candidates</b>		
2x2 gauze squares	Face masks	Sanitizing materials
Air/water syringe tips	Facial tissue	Soap
Autoclave bags, small	Gloves	Standard saliva ejectors
Autoclave bags, medium	Gloves, nonlatex (S,M,L,XL)	Surface disinfectant
Autoclave tape	Overgloves	Tray covers
Barrier covers/tape	Instrument trays, disposable	Trash bags
Cotton-tip applicators	Paper towels	
Drinking cups	Prophy paste	

## 8. SJVC Policies for Screening and Social Distancing ADEX Exam 2023

### Facility Arrangements:

- Distance between each operatory in use is a minimum of 6 feet. Barrier present between units closer together

### Vaccination Status:

- **SJVC is currently reviewing protocol regarding student clinician vaccination status. If you are not fully vaccinated, (2-weeks post second dose), please wear a mask while on campus.**

### EXAM ROOM ASSIGNMENTS

*(NOTE: See official CDCA-WREB-CITA documents for days, dates, and times)*

We hope that this guide has been helpful and that your examination experience at San Joaquin Valley College-Ontario will be a pleasant one. Good luck on your examination!!