



Site:

Rochester Community and Technical College (RCTC) Heintz Building is offering its dental facilities to candidates for the **2023 ADEX, CDCA-WREB-CITA** dental hygiene manikin examination, which will be held on Thursday, May 4th, 2023. Please read the following information carefully.

Facility Fee:

Non-students of Rochester Community and Technical College will be assessed a fee of \$200.00. This fee will include the use of the facility, equipment and miscellaneous supplies. The facility fee will be collected upon online registration by CDCA-WREB-CITA.

Parking/Entering the Building:

Free parking is available in all RCTC lots. It is suggested that you park in the west lot at the Heintz Building across from Olmsted Medical Facility. Enter the building at door H14 from the West parking lot (1926 Collegeview Drive, Rochester MN, 55904).

Building Hours:

The building will open @ 7:00 am on Thursday, May 4th, 2023

Finding the Dental Clinic: Dental Hygiene Clinic, Heintz Building, 2nd floor, H2314 – Signs will be posted!

To Stairs – turn right into small hallway just past entryway

Take stairs to the 2nd floor - turn left when exiting stairs, then go to straight down the hallway

Follow hallway to the end and the dental clinic will be directly to your left

(For a more detailed Heintz building map, see below)

Supplies and Equipment:

Rochester Community and Technical College is a latex safe environment and will provide the following equipment:

- Over garments
- Nitrile exam gloves (XS, S, M, L, XL)
- Ear loop face masks
- Surface disinfectant and barriers
- Saliva ejectors / HVE disposable tips
- Plastic Air/water syringe tips
- Pens for writing

- 2 x 2 gauze squares
- Tray covers
- Facial tissue
- Dentsply Cavitron Select SPS Integrated Ultrasonic Unit (uses only 30K inserts)
- Dentsply Cavitron 30K black handpiece sheath for inserts
- **Rochester Community and Technical College will not provide the following:**
 - Protective eyewear with side shields for the candidate
 - Face shields if used
 - Instruments and 30K Ultrasonic inserts
 - Plastic containers for transporting instruments
 - Appropriate clinic attire

Personal Protection and Infection Control:

It is the policy of the RCTC Dental Hygiene Department that all candidates wear protective glasses, with side-shields, gloves, and a face mask while performing the examination. Each candidate is responsible for providing protective eyewear with side shields. **Overgarments, gloves, and masks will be provided as part of the basic site fee.**

Please Note: Cubicle surfaces and operatory equipment must be cleaned and disinfected with the supplied disinfectant when the exam is completed. All instruments and handpieces must be sterile, please bring them to the examination in appropriate packaging. **Sterilization services are not available prior to or after the examination.**

Equal Opportunity and Compliance with RCTC Dental Clinic Policies:

Rochester Community and Technical College is committed to the policy that all persons shall have equal access to its programs, facilities, and employment without regard to race, color, creed, religion, national origin, sex, age, marital status, disability, public assistance status, veteran status, or sexual orientation. Professional standards for behavior will be maintained at all times throughout the CDCA-WREB-CITA examination and incidents of unethical behavior will be reported by staff to CDCA-WREB-CITA personnel.

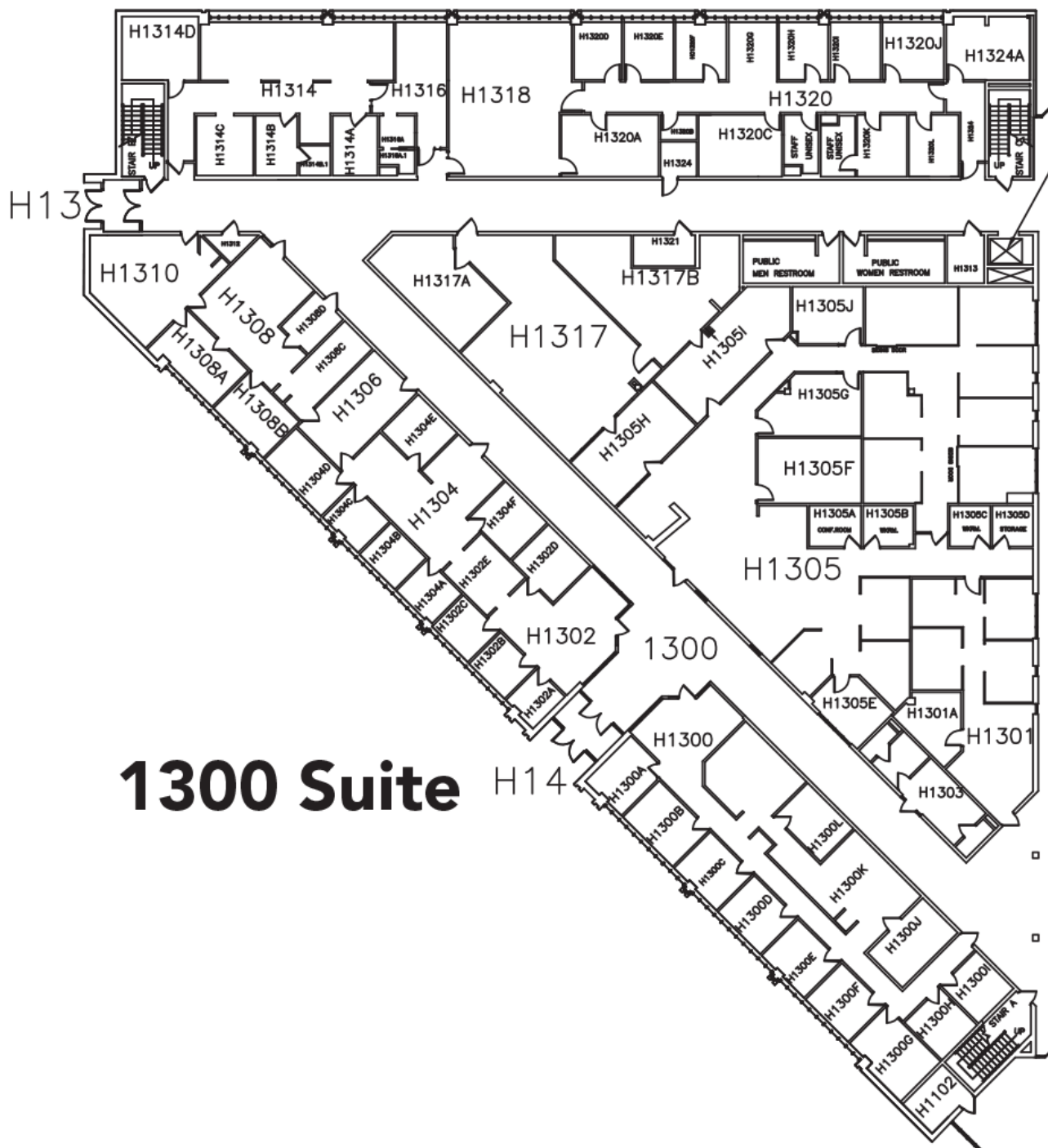
Map of building and directions:

See below

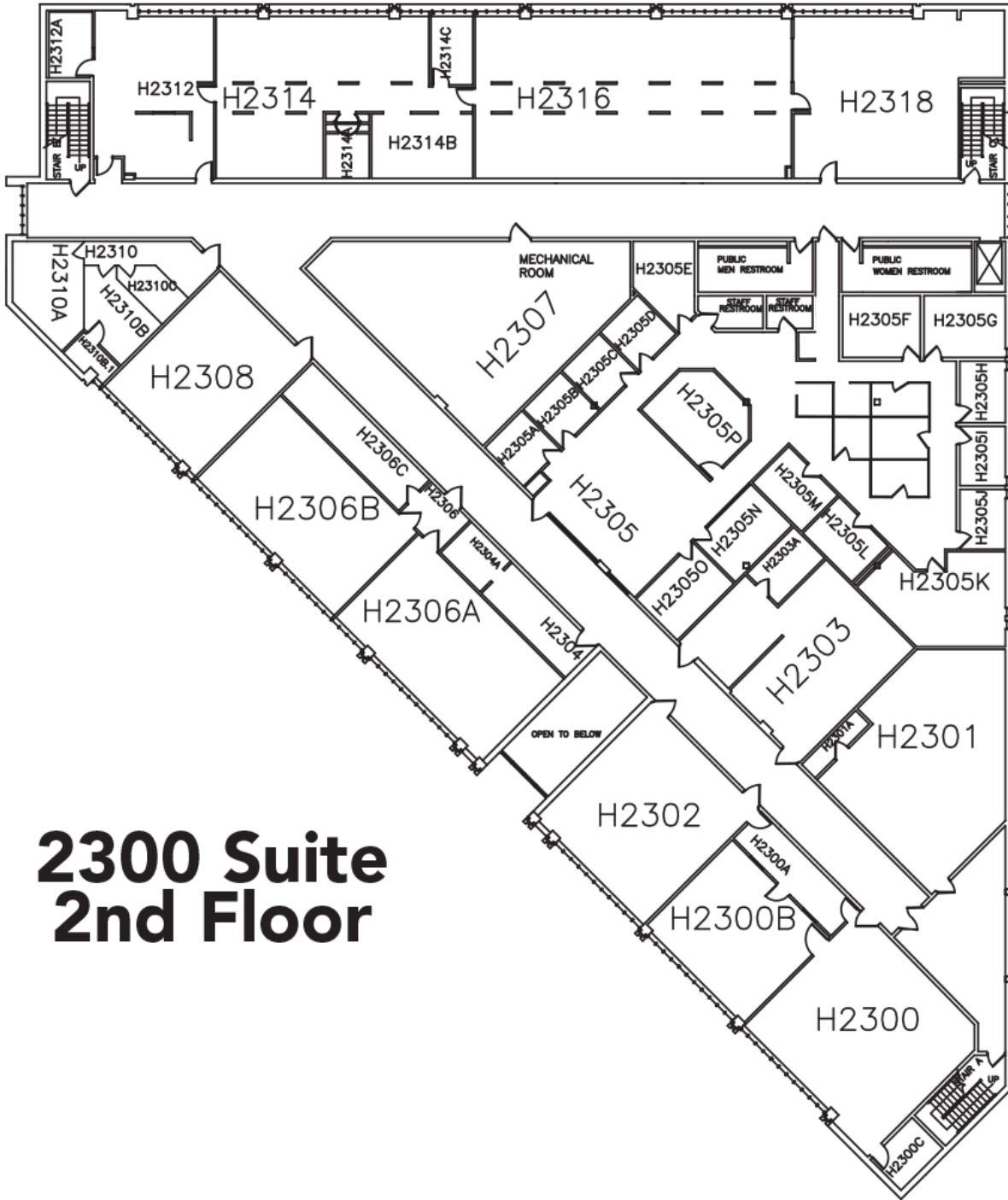
If you have questions, concerns or need more information please feel free to contact me.

Sincerely,

Cherie Fritz, RDH, MSDH
 RCTC Test Site Coordinator
 507-280-3114 / cherie.fritz@rctc.edu



1300 Suite



2300 Suite 2nd Floor

Directions to Heintz Center (1926 College View Road South East, Rochester, MN 55904):

HWY 52 Southbound: Exit at 41st STREET exit to access 37th STREET NW (turns into East Circle Drive and County Road 22) and travel east through the intersection of US 63. Before the County Road 9 intersection (stop light), merge right onto County Road 9 (College View Road). Take a left at the 4-way stop sign and another left into the parking lot of Heintz Center.

HWY 63 Southbound: Exit (left) at 37th STREET NW (turns into East Circle Drive and County Road 22). Follow directions in italics above.

HWY 63 Northbound: Exit at HWY 14 East (also known as 12th Street) and travel east. Turn left at 15th Avenue SE/Marion Road intersection. Follow 15th Avenue to 4th Street and turn right onto 4th street. At 4-way stop, turn right and then left into parking lot of Heintz Center.

I-90: Exit at HWY 63 North and follow instructions above.

HWY 14 Westbound or Eastbound: Exit at County Road 22 (30th Avenue) and follow to County Road 9 intersection. Turn left onto County Road 9 (College View Road). Take a left at the 4-way stop sign and another left into the parking lot of Heintz Center.