

**Colorado Northwestern Community
College**



**Exam Site Information for Candidates
CDCA-WREB-CITA
2023 Local Anesthesia Clinical Examination**

**Colorado Northwestern Community College
500 Kennedy Drive
Blakeslee Building
970.675.3250**

Exam Site Information for Candidates
2023 CDCA-WREB-CITA DH Local Anesthesia Clinical Examination

Table of Contents

1. School Facility and Services

- Facility Fees
- Clinic Address, Building Access and Hours
- Parking
- Security and Emergency Services
- ATM Machine
- Food Services Onsite

2. Preparing for the Exam

- Dental Operatory Units
- Equipment, Instruments and Expendable Materials
- Sterilization Services

3. During the Exam

- Infection Control (Surface Asepsis)
- Medical Emergencies and Equipment

4. Travel and Lodging Information

- Airport Information
- Ground Transportation
- Hotel Accommodation

5. Campus Map

6. Clinic Floor Plan

7. Required School-provided Expendable Dental Materials Appendices

1. School Facility and Services

- **Facility Fees**
 - The facility fee is \$50.00 and will be collected by CDCA-WREB-CITA at time of online registration.
- **Location, Building Access and Hours:** Dental Hygiene (Blakeslee Building), 500 Kennedy Drive, Rangely, CO 81648, 970.675.3250. Contact Tiffany Douglas for questions regarding the school, equipment, etc., building open 6:00am-6:00pm daily for duration of exam.
- **Parking:** Upon entry onto campus, you will enter the main parking lot. There is no pass or fee required.
- **Security and Emergency Services:** Call 911 in the event of an emergency.
- **ATM Machine:** N/A
- **Food Services Onsite:** Open from 7:00 am – 7:00 pm, located in the Johnson Building.

2. Preparing for the Exams

a. Local Anesthesia Exam, if applicable

- **Equipment, Instruments and Expendable Dental Materials:** Refer to the respective Local Anesthesia Candidate Guide for a list of materials and armamentarium that the Candidate must provide.
 - A. Air/Water Syringe Tips:** disposable tips are provided.
 - B. Expendable Materials:** Expendable dental materials supplied by the school are noted in **Appendix A**. If template is not utilized, add the expendable list to your document (items not listed are responsibility of Candidate).
- **Sterilization Services:** Sterilization services will be available during the duration of the exam. **Candidates retaking onsite will need their instruments sterilized prior to retake clinic entrance.**

3. During the Clinical Exam

- **Dental Operatory Units:** ADEC dental chair and unit.
- **Infection Control (Surface Asepsis):** Asepsis protocols all surfaces, dental chair, light and air/water and suction units.
 - A. Hazardous Waste Disposal (exam-type specific):**
 - **Hygiene:** Procedure for disposal of blood/saliva-soaked waste.
 - **Local Anesthesia:** Procedure for disposal of blood/saliva-soaked waste. Place in sharps container provided.
 - **Restorative:** Procedure for disposal of amalgam scraps.
 - B. Sharps Disposal:** Sharps containers are provided in each operatory. Needles, anesthetic carpules and blood-soaked gauze are disposed of in containers.

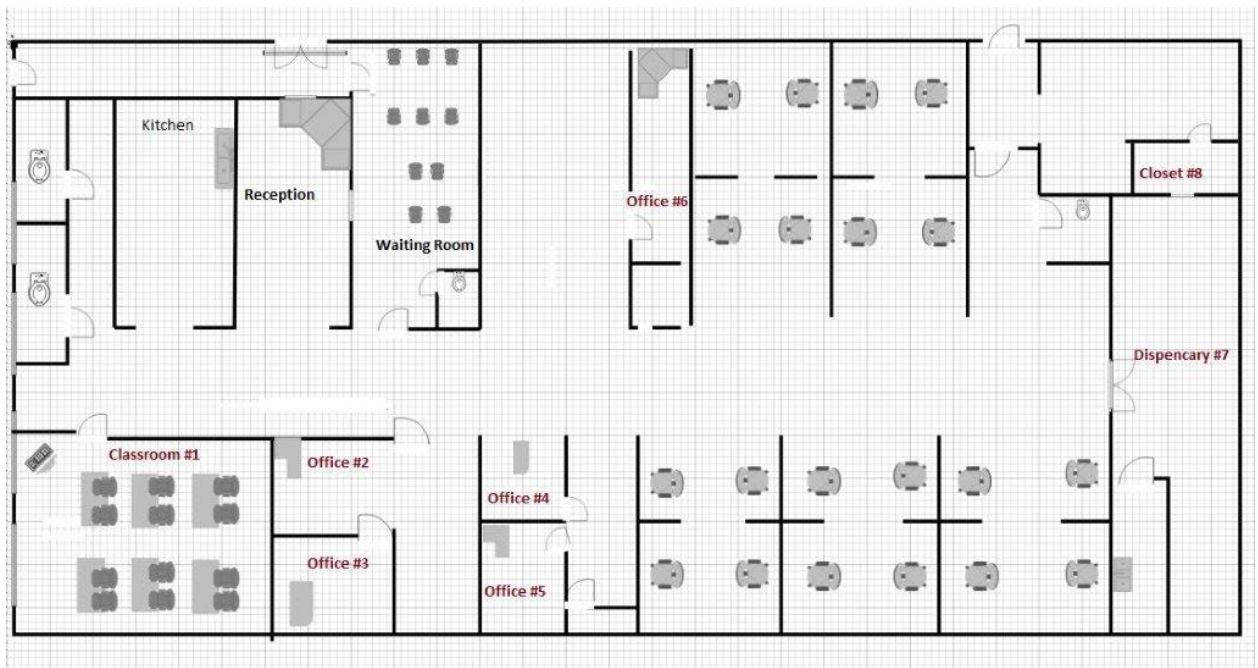
- **Emergency Medical Equipment:** AED located on East wall of Clinic. Oxygen and medical emergency kit located on table outside suite B. Call 911 in the event of an emergency. Must dial 9-911.

4. Travel and Lodging Information

- **Airport Information:** Nearest Airports are Vernal, Utah (60 miles); Grand Junction, Colorado (90 miles)
- **Ground Transportation:** N/A
- **Hotel Accommodations:** Blue Mountain Inn and Suites, 970.675.8888

5. Campus Map: Upon parking in main parking lot, walk towards the flagpole. Follow the teeth painted on the sidewalk to the North end of campus. DH clinic is in the Blakeslee building.

6. Clinic Floor Plan:



Required School-provided Expendable Dental Materials Appendices

APPENDIX A – Expendable Local Anesthesia Materials List Provided by Exam Site Host (School) To be provided in sufficient quantities for all Local Anesthesia Candidates		
2x2 gauze squares	Cotton-tip applicators	Patient bib clips, disposable
Air/water syringe tips	Drinking cups	Patient napkins/bibs
Antimicrobial mouthwash	Face masks	Sanitizing materials
Anesthetic(s)	Facial tissue	Soap
<ul style="list-style-type: none"> Local anesthetic(s) with and without vasoconstrictors 	Gloves	Standard saliva ejectors
<ul style="list-style-type: none"> Topical anesthetic(s) 	<ul style="list-style-type: none"> Gloves, nonlatex (S, M,L,XL) 	Surface disinfectant
Autoclave bags, small	<ul style="list-style-type: none"> Overgloves 	Syringe Needles (long & short)
Autoclave bags, medium	Headrest covers	Tray covers
Autoclave tape	Instrument trays, disposable	Trash bags
Barrier covers/tape	Paper towels	